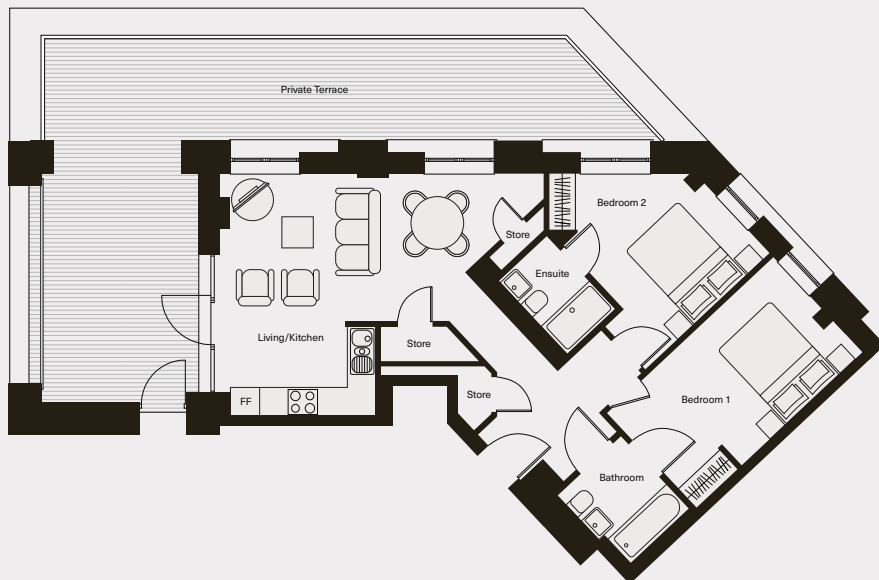




2 bedroom apartment

TYPE A2-28

AVERAGE SIZE → 837 SQ FT
DEPOSIT → 1 MONTHS RENT
EPC → B/C



ACCOMMODATION COMPRISES

- Entrance
- Open plan living and kitchen
- Master bedroom with Jack and Jill style bathroom
- Second bedroom with ensuite bathroom

GOOD TO KNOW

- Tenants are responsible for the payment of utilities as well as council tax
- Broadband Wi-Fi is included in the rental
- All tenancy applications subject to referencing

LOOKING TO JOIN US?

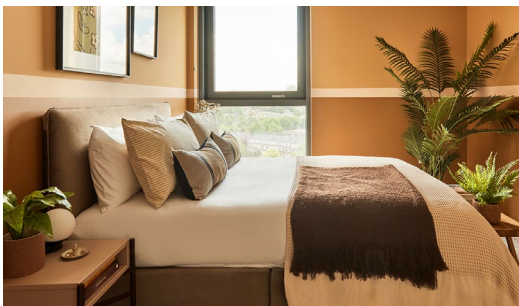
EMAIL US AT HELLO@BALEANDANCHOR.COM OR CALL 0203 7575 403



2 bedroom apartment

There's plenty of space to get your family and friends together at Bale & Anchor. Hang out in your living room and enjoy all the bespoke designer furniture on offer with your roomy sofa. Or cook up a storm in your state of the art kitchen with your Bosch hob and oven.

At the end of the day relax with a good nights sleep in your cosy bed with plenty of storage built in for all your best wardrobe purchases. And don't forget your stylish bathroom with all the facilities you can expect and more.



Life at Bale & Anchor just got even better.

- ROOF TERRACE • CINEMA LOUNGE • HI-TECH GYM
- ON-SITE TEAM • GARDEN LOUNGE • YOGA STUDIO • WORK SPACES
- FURNITURE INCLUDED • FLEXIBLE CONTRACTS

LOOKING TO JOIN US?

EMAIL US AT HELLO@BALEANDANCHOR.COM OR CALL 0203 7575 403

PLEASE NOTE SOME AMENITIES WILL ONLY BE AVAILABLE FROM SPRING 2024